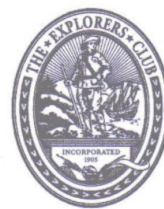


THE EXPLORERS

LOG



The Explorers Club
World Center for Exploration

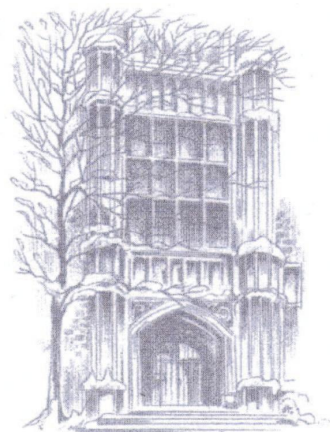
ECAD 2007 to Celebrate Polar Exploration

IN CONJUNCTION WITH THE START of the fourth International Polar Year (IPY), the 2007 Explorers Club Annual Dinner (ECAD) will feature "Polar Exploration" as its theme. ECAD 2007 has been scheduled for Saturday evening, March 17, 2007, and will be held at the Waldorf Astoria Hotel in New York City.

The IPY is a worldwide initiative designed to foster international cooperation in scientific research focused on our planet's polar regions. 1882-83 was designated as the first IPY. The second IPY took place fifty years later, in 1932-33. The third IPY, renamed the International Geophysical Year (IGY), occurred in 1957-58. The fourth IPY is scheduled to begin on March 1, 2007 and continue through March 1, 2009. The two-year time frame is designed to allow for two field seasons of research in both the Arctic and the Antarctic.

"Given the history of The Explorers Club, the tie-in to the International Polar Year is a natural one for us," observes EC President **Daniel A. Bennett MN'02**. "Twenty-three years before he became our first president in 1904, Adolphus W. Greely embarked on the Lady Franklin Bay Expedition to Ellesmere Island, which was the United States' official contribution to the first International Polar Year. The Club was founded largely by polar explorers and they have represented a significant and important part of our membership ever since. We are proud that our membership roster has included leading polar explorers like Robert Peary, Matthew Henson, Roald Amundsen, Vilhjalmur Stefansson, Richard Byrd, Wally Herbert and Will Steger."

Look for more information about the 2007 Explorers Club Annual Dinner in upcoming mailings and on our website, www.explorers.org.



Published Quarterly by
The Explorers Club
Fall 2006, Volume 38 Number 4

National Geographic, she and Dr. Ken Glander, then Director of the Center, discovered the new species. Since the discovery in 1999, Dr. Mitchell Irwin and his team have studied the animal and its habitat and have succeeded in setting aside for conservation a large area of what is thought to be the range of this lemur. Bransilver has photographed all phases of this study since the lemur's discovery, and served as the field producer for *National Geographic's Wild Chronicles*, which will present some of this work.

Wild Chronicles Episode 205, hosted by Boyd Matson, was scheduled for broadcast by WLIW New York the week of November 6–10, 2006. Check local stations for listings. WGPU, the local PBS station for Naples, Ft. Myers and surrounding areas, has tentatively scheduled the program for Sunday, November 26, 2006 at 5:30 a.m.

Connie Bransilver's book, *Wild Love Affair: Essence of Florida's Native Orchids*, is now in bookstores or may be ordered from www.westcliffepublishers.com.

St. Louis Chapter

St. Louis Chapter member **Jim Thompson FN'05** had a very successful expedition to the Atacama Desert in Chile with his colleague **J. Judson Wynne FN'06** and scientists from NASA and Chile.

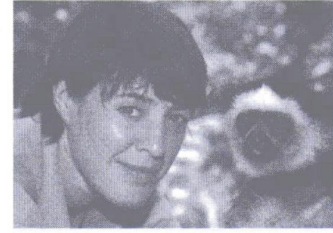
The expedition chose the Atacama Desert region of northern Chile due to its importance as a Mars analog. The Atacama Desert is considered an excellent Mars analog because it is characterized by pronounced diurnal temperature variation and high ultraviolet radiation. Additionally, geologic evidence suggests the Atacama is the driest desert on the planet; however, this region may have been a much wetter place – much like Mars. This was the first scientific cave expedition to the Atacama.

Finding and evaluating caves for their potential to harbor life on Mars is not a new concept. Currently, the only technique used to locate Martian caves is visual interpretation of imagery. The purpose of this expedition was to (1) evaluate Atacama Desert caves for their applicability in the Phase 2 of the Earth-Mars Cave Detection Project; and, (2) collect baseline thermographic imagery and ground-based measurements of evaluated caves. Jim and Jud will continue to work with NASA to develop the means to survey Mars thermographically to better detect temperature variations that could successfully indicate the presence of caves.

To read the entire report and see the interesting visuals you can go to our website at www.explorers-stl.com and click on the link to the expedition.

On September 9 and 10 **David Isserman MN'06**, **Marguerite Garrick MN'04** and Valerie Vartanian of the Missouri Botanical Garden, in partnership with The Academy of Science, St. Louis, The Saint Louis Zoo, The Missouri Department of Conservation, the St. Louis Department of Parks and many other conservation and management organizations in St. Louis, once again scoured Forest Park for flora and fauna. Many of the same biologists who "blitzed" in 2004 returned to update their findings and most were excited to find new species flourishing in this 1200-acre park.

Results from our first BioBlitz are available on our website now and those from this BioBlitz will be available on our website at www.explor-



Connie Bransilver FN'96 with a new species of Sifaka lemur.

Episode 205 of National Geographic's Wild Chronicles features the discovery of – and subsequent research on – a new species of Sifaka lemur discovered deep in the eastern rainforest of Madagascar.

